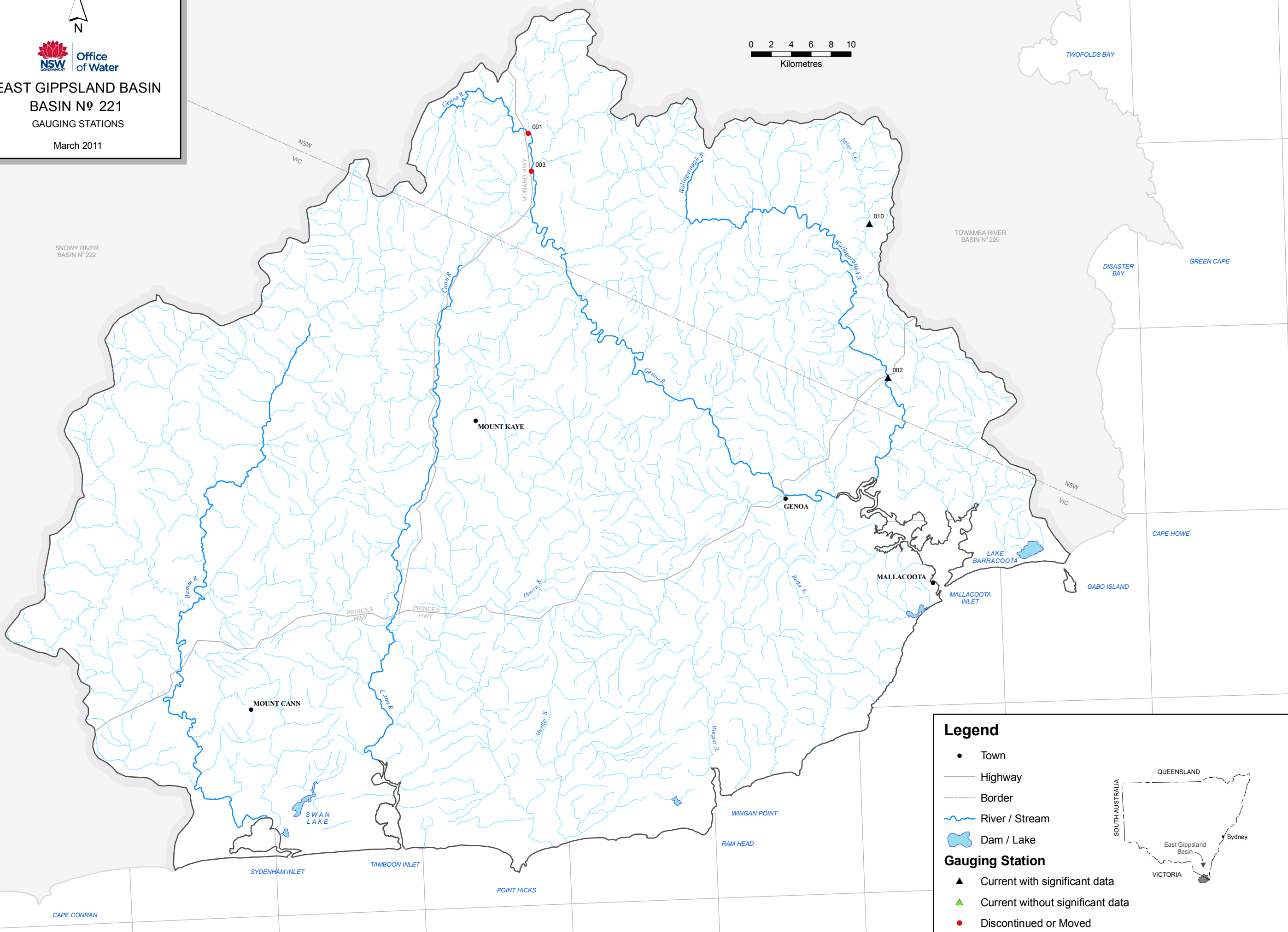
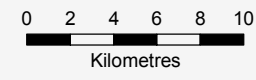


148°50'0"E 149°0'0"E 149°10'0"E 149°20'0"E 149°30'0"E 149°40'0"E 149°50'0"E 150°0'0"E 150°10'0"E

37°0'0"S 37°10'0"S 37°20'0"S 37°30'0"S 37°40'0"S 37°50'0"S



**EAST GIPPSLAND BASIN**  
**BASIN N<sup>o</sup> 221**  
**GAUGING STATIONS**  
March 2011



**Legend**

- Town
  - Highway
  - - - Border
  - ~ River / Stream
  - ◼ Dam / Lake
- Gauging Station**
- ▲ Current with significant data
  - ▲ Current without significant data
  - Discontinued or Moved



CARTOGRAPHY BY: J.C. PETROVIC March 2011

148°40'0"E 148°50'0"E 149°0'0"E 149°10'0"E 149°20'0"E 149°30'0"E 149°40'0"E 149°50'0"E 150°0'0"E 150°10'0"E

Site ID	Sitename	Cat	Latitude	Longitude
221001	Genoa River at Rockton	C	-37° 08' 17"	149° 19' 06"
221002	Wallagaraugh River at Princes Highway	A	-37° 22' 13"	149° 42' 50"
221003	Genoa River at Bondi	C	-37° 10' 21"	149° 19' 13"
221010	Imlay Creek at Imlay Road Bridge	A	-37° 13' 52"	149° 41' 55"