

151°45'0"E

152°0'0"E

152°15'0"E

152°30'0"E



Office of Water

KARUAH RIVER BASIN

BASIN N^o 209

GAUGING STATIONS

March 2011

MANNING RIVER BASIN N^o 208

HUNTER RIVER BASIN N^o 210

MACQUARIE-TUGGERAH LAKES BASIN N^o 211

CARTOGRAPHY BY: J.C. PETROVIC March 2011

151°45'0"E

152°0'0"E

152°15'0"E

152°30'0"E

32°0'0"S

32°15'0"S

32°30'0"S

32°45'0"S

33°0'0"S

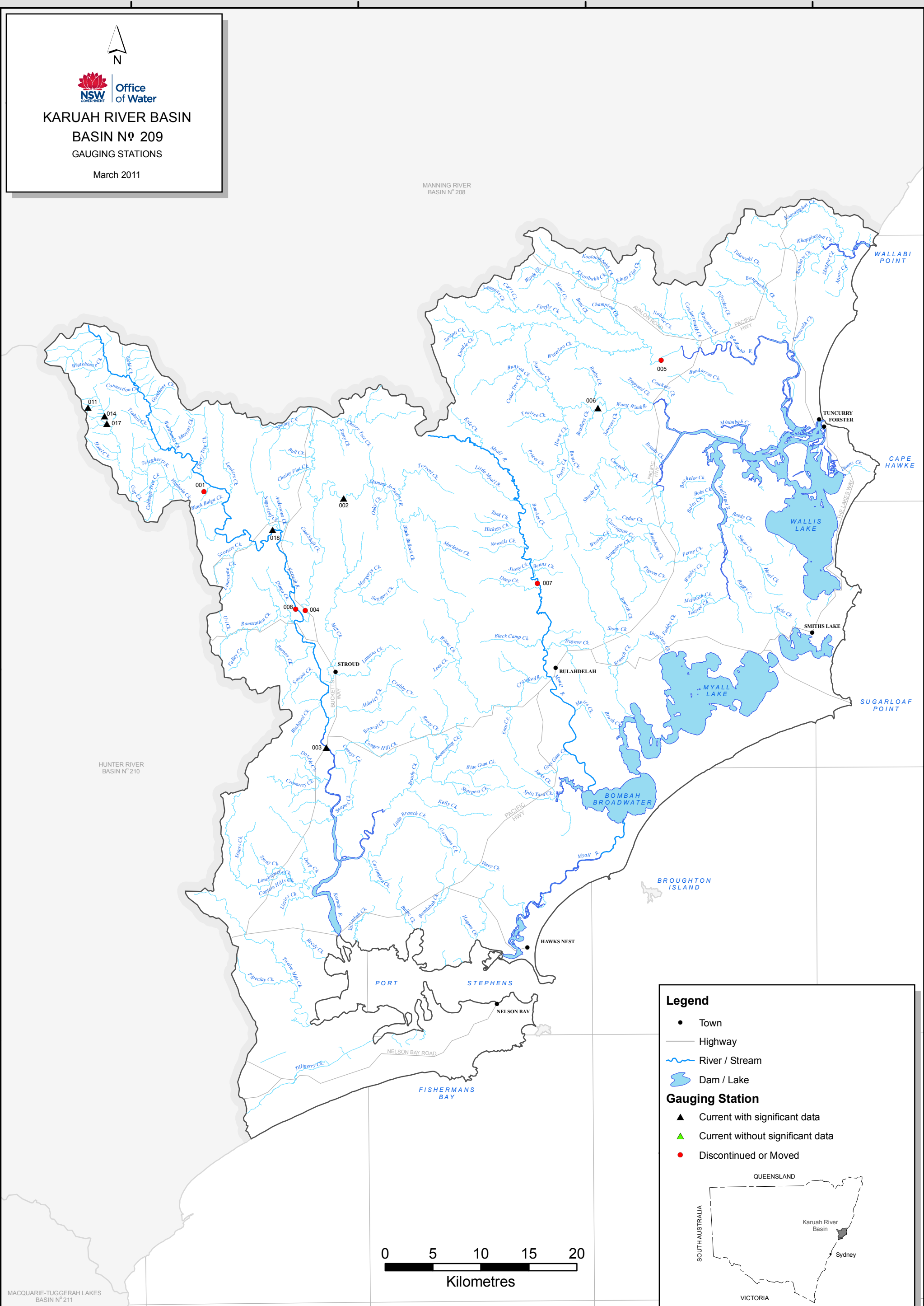
32°0'0"S

32°15'0"S

32°30'0"S

32°45'0"S

33°0'0"S



Legend

• Town

— Highway

~ River / Stream

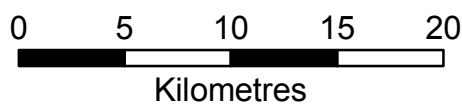
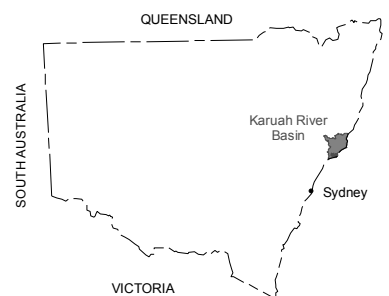
■ Dam / Lake

Gauging Station

▲ Current with significant data

▲ Current without significant data

● Discontinued or Moved



Site ID	Sitename	Cat	Latitude	Longitude
209001	Karuah River at Monkerai	C	-32° 14' 10"	151° 49' 28"
209002	Mammy Johnsons River at Pikes Crossing	A	-32° 14' 37"	151° 58' 44"
209003	Karuah River at Booral	A	-32° 28' 41"	151° 57' 26"
209004	Mammy Johnsons River at Stroud Road	C	-32° 20' 56"	151° 56' 07"
209005	Wallamba River at Near Nabiac	C	-32° 06' 58"	152° 19' 52"
209006	Wang Wauk River at Willina	A	-32° 09' 39"	152° 15' 39"
209007	Myall River at Markwell	C	-32° 19' 32"	152° 11' 33"
209008	Karuah River at Stroud Road	C	-32° 20' 52"	151° 55' 29"
209011	Crabapple Creek at Chichester State Forest	A	-32° 09' 21"	151° 41' 51"
209014	Sassafras Creek at Chichester State Forest	A	-32° 09' 51"	151° 42' 56"
209017	Coachwood Creek at Chichester State Forest	A	-32° 10' 17"	151° 43' 04"
209018	Karuah River at Dam Site	A	-32° 16' 22"	151° 54' 00"