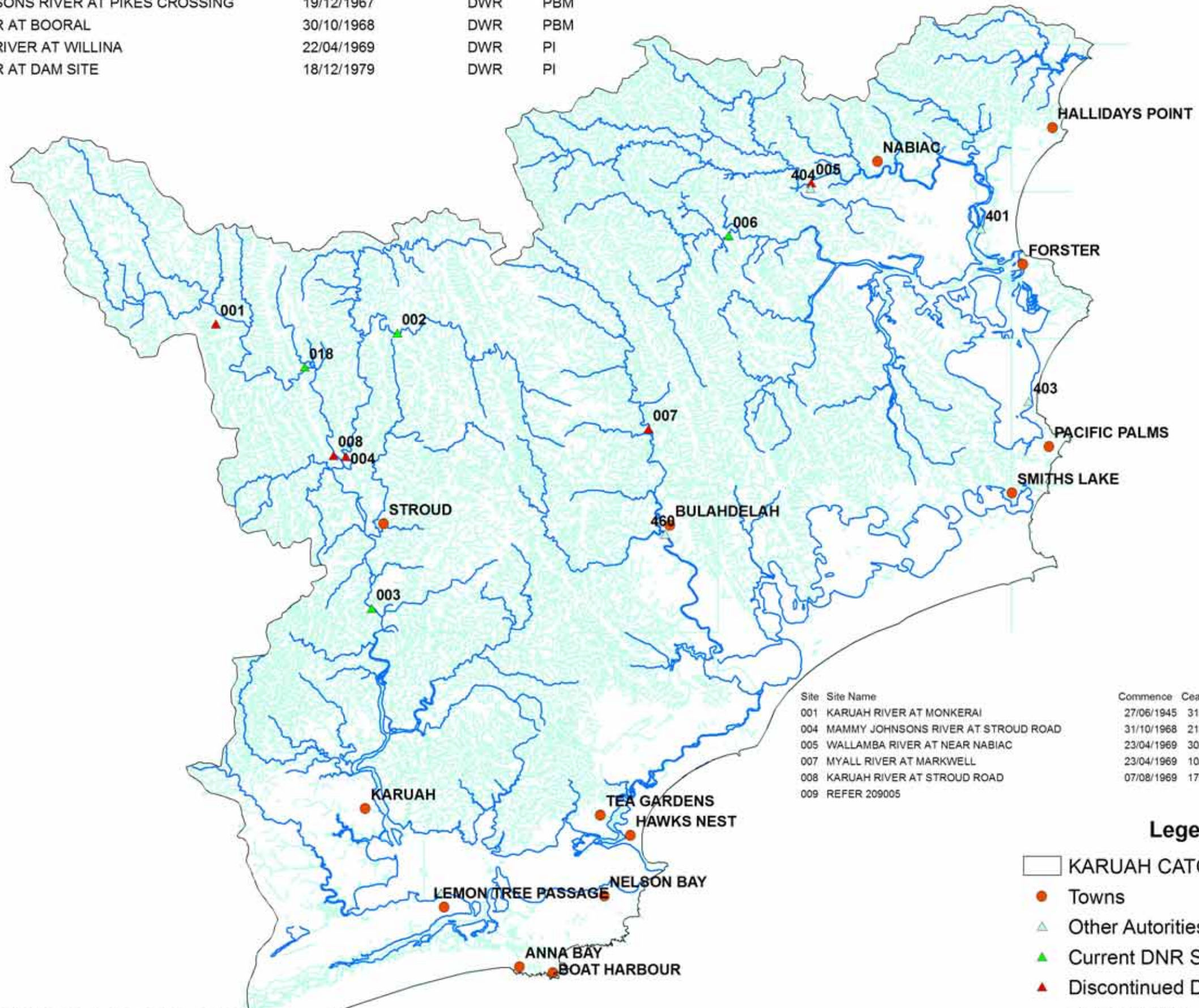


KARUAH RIVER BASIN BASIN NO 209



Site	Site Name	Commence	Cease	Org Code	Network
002	MAMMY JOHNSONS RIVER AT PIKES CROSSING	19/12/1967		DWR	PBM
003	KARUAH RIVER AT BOORAL	30/10/1968		DWR	PBM
006	WANG WAUK RIVER AT WILLINA	22/04/1969		DWR	PI
018	KARUAH RIVER AT DAM SITE	18/12/1979		DWR	PI

32°0'0"S



Site	Site Name	Commence	Cease	Org Code	Network
001	KARUAH RIVER AT MONKERAI	27/06/1945	31/07/1981	DWR	DISC
004	MAMMY JOHNSONS RIVER AT STROUD ROAD	31/10/1968	21/05/1981	DWR	DISC
005	WALLAMBA RIVER AT NEAR NABIAC	23/04/1969	30/09/1978	DWR	DISC
007	MYALL RIVER AT MARKWELL	23/04/1969	10/10/1979	DWR	DISC
008	KARUAH RIVER AT STROUD ROAD	07/08/1969	17/09/1980	DWR	DISC
009	REFER 209005			NSW	

Legend

- KARUAH CATCHMENT
- Towns
- ▲ Other Authorities Stations Events
- ▲ Current DNR Stations
- ▲ Discontinued DNR Stations
- Major Rivers
- Streams

WATER MONITORING & REPORTING
DEPARTMENT OF NATURAL RESOURCES

