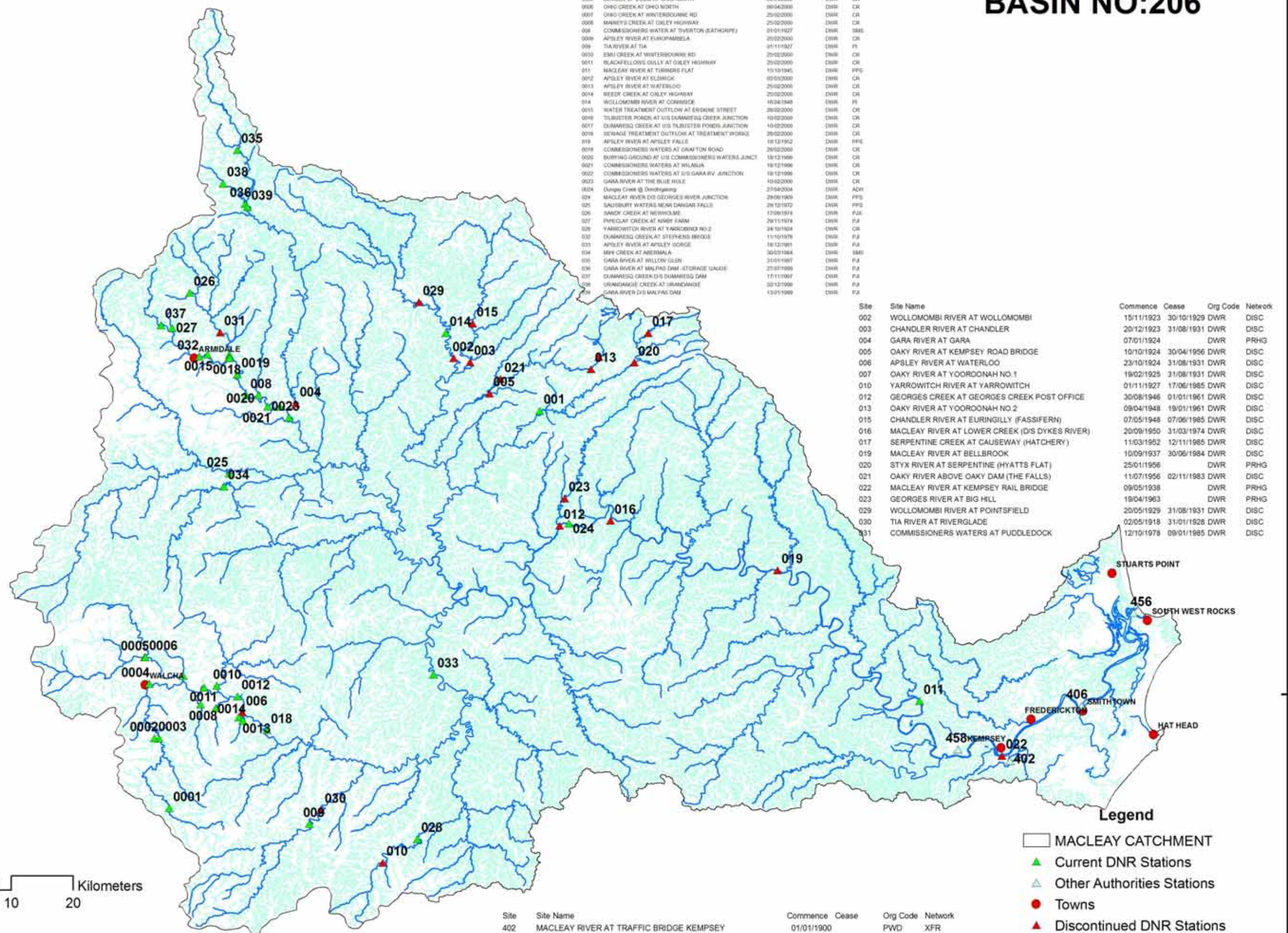


MACLEAY RIVER BASIN BASIN NO:206



30°0'0"S

31°0'0"S



Site	Site Name	Commence	Cease	Org Code	Network
001	APSELY RIVER AT ANDY'S HOSE	25/02/2000		DWR	CR
002	STYX RIVER AT JEOLA	29/04/1918		DWR	PS
003	APSELY RIVER AT SOMERSET	30/02/2000		DWR	CR
004	APSELY RIVER AT SOMERSET GULLY U/S PUMP HOUSE	30/02/2000		DWR	CR
005	APSELY RIVER AT ANGLES ST	25/02/2000		DWR	CR
006	BIRGEN OP ZOOM AT OHO NORTH	30/04/2000		DWR	CR
007	OHIO CREEK AT OHIO NORTH	30/04/2000		DWR	CR
008	OHIO CREEK AT WINTERBOURNE RD	25/02/2000		DWR	CR
009	MARNEY'S CREEK AT OXLEY HIGHWAY	25/02/2000		DWR	CR
010	COMMISSIONERS WATER AT TIVERTON (EATHORPE)	01/01/1927		DWR	SMC
011	APSELY RIVER AT ELKHOPFABELLA	25/02/2000		DWR	CR
012	TIA RIVER AT TIA	01/11/1927		DWR	PS
013	EMU CREEK AT WINTERBOURNE RD	25/02/2000		DWR	CR
014	BLACKFELLOWS GULLY AT OXLEY HIGHWAY	25/02/2000		DWR	CR
015	MACLEAY RIVER AT TURBISH FLAT	15/10/1945		DWR	PFE
016	APSELY RIVER AT ELZHICK	05/03/2000		DWR	CR
017	APSELY RIVER AT WATERLOG	25/02/2000		DWR	CR
018	REEDY CREEK AT OXLEY HIGHWAY	25/02/2000		DWR	PS
019	WOLLOMOMBI RIVER AT CORNSHED	10/04/1948		DWR	PS
020	WATER TREATMENT OUTFLOW AT ERDENE STREET	26/02/2000		DWR	CR
021	TILBUSTER PONDS AT U/S DUMARISQ CREEK JUNCTION	10/02/2000		DWR	CR
022	DUMARISQ CREEK AT U/S TILBUSTER PONDS JUNCTION	10/02/2000		DWR	CR
023	SEWAGE TREATMENT OUTFLOW AT TREATMENT WORKS	29/02/2000		DWR	CR
024	APSELY RIVER AT APSELY FALLS	18/12/1962		DWR	PFE
025	COMMISSIONERS WATERS AT UNATON ROAD	20/02/2000		DWR	CR
026	BURRING GROUND AT U/S COMMISSIONERS WATERS JUNCT	18/12/1966		DWR	CR
027	COMMISSIONERS WATERS AT WALALUA	18/12/1966		DWR	CR
028	COMMISSIONERS WATERS AT U/S GARA RIVER JUNCTION	18/12/1966		DWR	CR
029	GARA RIVER AT THE BLUE HOLE	10/02/2000		DWR	CR
030	Dungy Creek @ Dundigaring	27/04/2004		DWR	ADH
031	MACLEAY RIVER @S GEORGES RIVER JUNCTION	29/06/1909		DWR	PFE
032	SALISBURY WATERS NEAR DANGAR FALLS	29/12/1972		DWR	PFE
033	SANDY CREEK AT NEWHOLME	12/09/1974		DWR	PJK
034	PARCELAY CREEK AT HONEY FARM	29/11/1974		DWR	PJK
035	YARROWITCH RIVER AT YARROWITCH NO 2	24/01/1924		DWR	CR
036	DUMARISQ CREEK AT STEPHENS BRIDGE	11/10/1978		DWR	PJK
037	APSELY RIVER AT APSELY GORGE	18/12/1961		DWR	PJK
038	MR CREEK AT ABERMALA	30/03/1984		DWR	SMC
039	GARA RIVER AT WILLOW GLER	31/01/1967		DWR	PJK
040	GARA RIVER AT MALPAS DAM - STORAGE GAUGE	27/01/1999		DWR	PJK
041	DUMARISQ CREEK @S DUMARISQ DAM	17/11/1997		DWR	PJK
042	BRANDANKIE CREEK AT BRANDANKIE	02/12/1999		DWR	PJK
043	GARA RIVER @S MALPAS DAM	13/01/1999		DWR	PJK

Site	Site Name	Commence	Cease	Org Code	Network
002	WOLLOMOMBI RIVER AT WOLLOMOMBI	15/11/1923	30/10/1929	DWR	DISC
003	CHANDLER RIVER AT CHANDLER	20/12/1923	31/08/1931	DWR	DISC
004	GARA RIVER AT GARA	07/01/1924		DWR	PRHG
005	OAKY RIVER AT KEMPSEY ROAD BRIDGE	10/10/1924	30/04/1956	DWR	DISC
006	APSELY RIVER AT WATERLOG	23/10/1924	31/08/1931	DWR	DISC
007	OAKY RIVER AT YOORONAH NO 1	19/02/1925	31/08/1931	DWR	DISC
010	YARROWITCH RIVER AT YARROWITCH	01/11/1927	17/06/1985	DWR	DISC
012	GEORGES CREEK AT GEORGES CREEK POST OFFICE	30/08/1946	01/01/1961	DWR	DISC
013	OAKY RIVER AT YOORONAH NO 2	09/04/1948	19/01/1961	DWR	DISC
015	CHANDLER RIVER AT EURINGILLY (FASSIFERN)	07/05/1948	07/06/1985	DWR	DISC
016	MACLEAY RIVER AT LOWER CREEK (D'S DYKES RIVER)	20/09/1950	31/03/1974	DWR	DISC
017	SERPENTINE CREEK AT CAUSEWAY (HATCHERY)	11/03/1952	12/11/1965	DWR	DISC
019	MACLEAY RIVER AT BELLBROOK	10/09/1937	30/06/1984	DWR	DISC
020	STYX RIVER AT SERPENTINE (HYATTS FLAT)	25/01/1956		DWR	PRHG
021	OAKY RIVER ABOVE OAKY DAM (THE FALLS)	11/07/1956	02/11/1983	DWR	DISC
022	MACLEAY RIVER AT KEMPSEY RAIL BRIDGE	09/05/1938		DWR	PRHG
023	GEORGES RIVER AT BIG HILL	19/04/1963		DWR	PRHG
029	WOLLOMOMBI RIVER AT POINTSFIELD	20/05/1929	31/08/1931	DWR	DISC
030	TIA RIVER AT RIVERGLADE	02/05/1918	31/01/1928	DWR	DISC
031	COMMISSIONERS WATERS AT PUDDLEDOCK	12/10/1978	09/01/1985	DWR	DISC

Legend

- MACLEAY CATCHMENT
- ▲ Current DNR Stations
- △ Other Authorities Stations
- Towns
- ▲ Discontinued DNR Stations
- Major Rivers
- Streams

Site	Site Name	Commence	Cease	Org Code	Network
402	MACLEAY RIVER AT TRAFFIC BRIDGE KEMPSEY	01/01/1900		PWD	XFR
406	MACLEAY RIVER @ SMITHTOWN			PWD	
456	SOUTH WEST ROCKS			PWD	
458	MACLEAY RIVER @ UPSTREAM EUROKA			PWD	

WATER MONITORING & REPORTING
DEPARTMENT OF NATURAL RESOURCES

